



AZTURK HOLDING FUN PARK

BAKU
2022





AZTURK FUN PARK

2 - THE COMPANIES



- **FANTAWILD** is the number one in China in the construction and management of theme park.

The company owns **25 parks in operation across China** in cities like Wuhu, Qingdao, Zhuzhou, Shenyang, Zhengzhou, Xiamen, Tianjin, Ningbo, etc.. With creativity at its core, Fantawild combines Chinese culture with high technology to build unique types of entertainment and technology theme parks.

FANTAWILD now has 4 types of theme parks: **Fantawild Adventure, Fantawild Dreamland, Fantawild Oriental Heritage, and Fantawild Water Park.**

These theme parks display amusement, culture and history, which has a positive effect on society, in return helping to boost the tourism industry.





AZTURK FUN PARK

2 - THE COMPANIES



- **LOFTUS OVERSEAS MANAGEMENT (LOM)** is a leader on turnkey theme park projects. From his headquarter in Hong Kong the company has supported multiple theme parks and leisure activities in South Korea, Turkey, France and all around the world.

LOM is a project developer involved in the engineering, construction and management of entertainment and cultural projects.

LOM is specialized in:

- **Theme park marketing studies and engineering of attractions.**
- **Master planning** of theme parks.
- **Contracting authority** assistance and/or **prime contractor** for theme park construction.
- **Creation and scenography** of attractions
- **Manufacturing and installation** of attractions.
- Consulting and **management services** for leisure industry



Confidential document – Reproduction total or partial and redistribution to third part are forbidden without Fantawild & Lom approval



AZTURK FUN PARK

3 - THEME PARK PROJECT



The project is to develop a Theme park in **Azerbaijan**.

This Theme Park will support the attractiveness of the location, generating millions of visitors coming from all over the world.

The Theme Park will provide full of distractions for the families and people will enjoy to come spending few hours for rest or to share an experience.



To bring quickly notoriety and fame, attraction parks are the best solution to promote an area. The first year, millions of people know the site and come to visit the place.

Because the location becomes famous, the value of the land is rising and helps to develop related activities as hotels, restaurants, malls, shops. The marketing analysis will change totally with the park visitors frequency.



As for all the parks in the world and in parallel of the promotion of Azerbaijan, this leisure industry provides financial resources and employment for at least 50 years in the location.



AZTURK FUN PARK

4 - THEME PARK STRATEGY

Baku is a perfect location in Azerbaijan to develop tourism and a leisure business. The country needs projects to entertain the tourists and local population. LOM offers to introduce in **Baku, a theme park to fulfill the existing needs .**

This theme park will be the first in the area. We want to provide in Baku the same quality attractions than Western European, Asian, or American visitors enjoy in a theme park.

We put together innovative, rare, classical and essential rides to bring the park under spotlights on a local, national and international scale.

Our Objectives are:

- **Attract visitors** : It's a commercial goal. We're offering something new and exciting in Baku. It would be the first very large theme park in the region and a new experience for the visitors. Our rides will attract visitors in an easy way because a simple look on them is enough to create the show. New, impressive and secure : three good reasons to enjoy the park.
- **Create the buzz and consumers loyalty:** Thrilling rides, unforgettable shows and sceneries will make visitors speak about the park as the place where to go or to come back. It will also attract media, park fan, local businesses ... Unique rides in **Baku will attract consumers from all over the country and from other places in the sub-region.**
- **B ring B aku under spotlights-pleasure and fun in B aku the site will become the innovative place in the county.** The county have some very interesting touristic places and soon a modern theme park will promote the destination. That's two good reasons to come in Baku and visit the place.

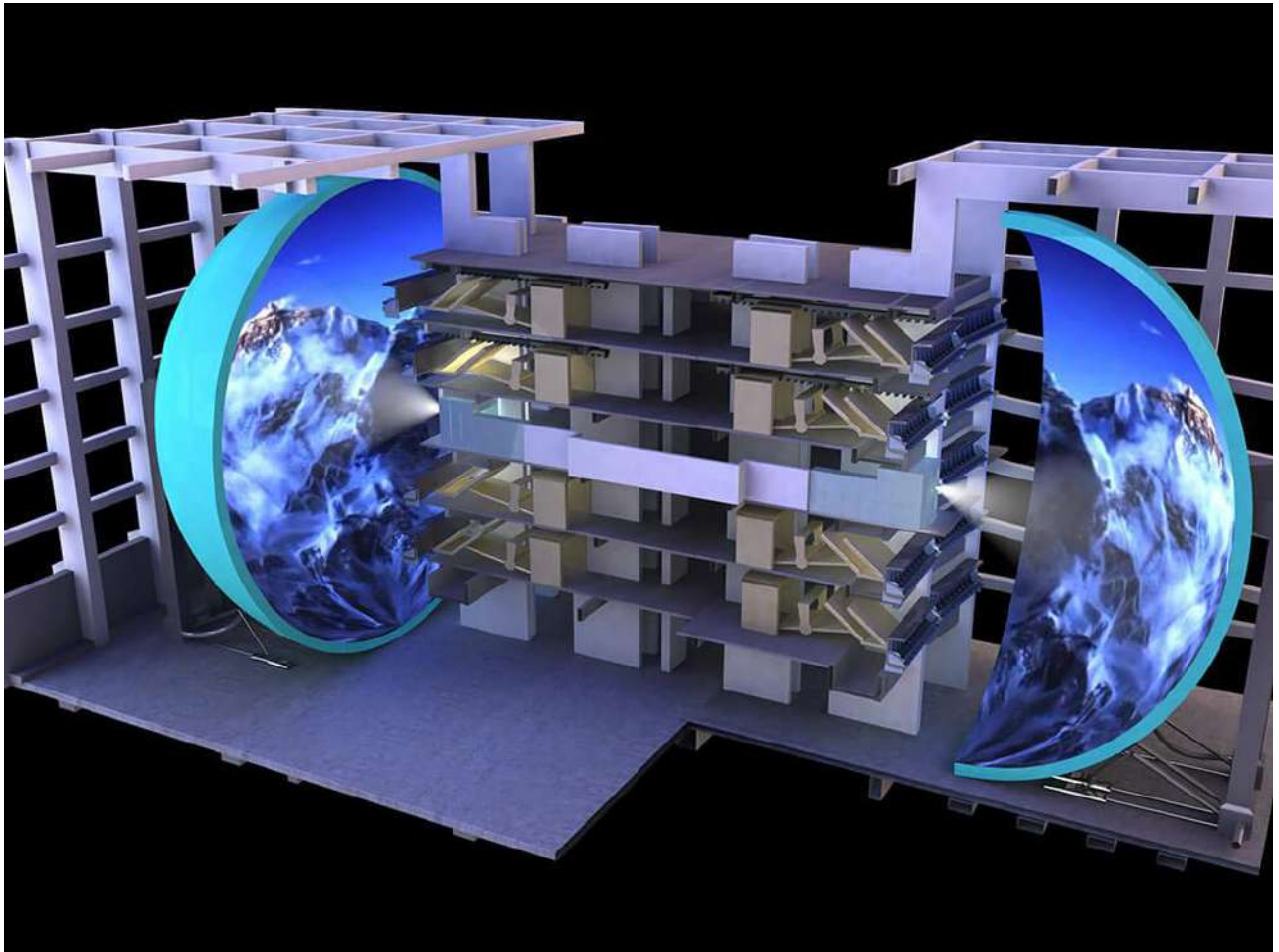




AZTURK FUN PARK

5 - INDOOR ATTRACTIONS

SUSPENDED SPHERICAL THEATERS



Offering spectacular 3D visuals on an expansive hemispherical screen, along with a breathtaking view from midair, the suspended spherical theater allows audiences to feel as if they can fly through the air with the greatest of ease.

The **suspended spherical theater's** hemispherical screen is 22 meters in diameter. Two 70mm pearl-eye polarizing projectors are used to project films.



AZTURK FUN PARK

5 - INDOOR ATTRACTIONS

SUSPENDED SPHERICAL THEATERS



SUSPENDED SPHERICAL THEATERS

Features

1. Large Hemispherical Screen (22 meters in diameter)

Visitors are enclosed under the large hemispherical screen's over-arching dome-shaped component; the view above is exceptionally expansive, and gives visitors the impression of being witness to a view of endless skies.

2. Hanging Seats + Simulated Special Effects

Hanging seats give visitors the feel of flying through the air. The audience experiences rushing winds and other effects, in accordance with the action unfolding onscreen.

3. Digital High-Definition films

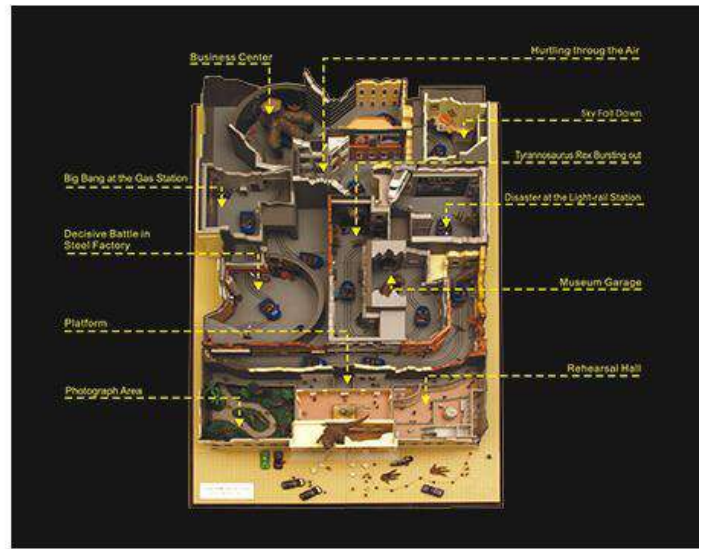
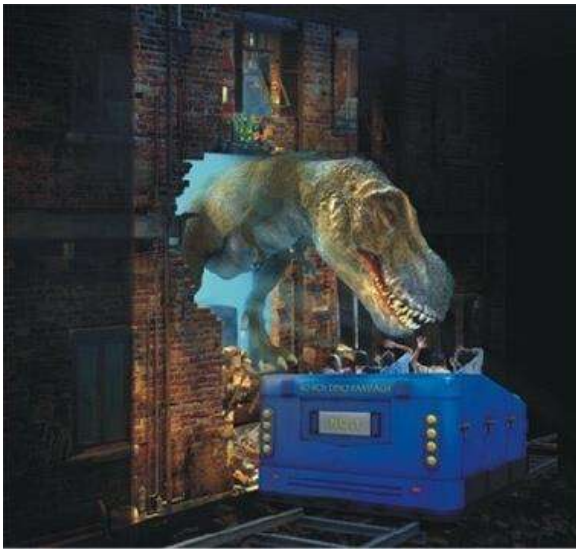
Visitors are in for a superior visual and audio experience, thanks to the clear imagery, vivid color, and top-notch sound quality of our digital high-definition films.

Confidential document – Reproduction total or partial and redistribution to third part are forbidden without Fantawild & Lom approval



INDOOR ATTRACTIONS

4D DARK RIDES



4D Dark Rides are large, elaborate indoor attractions in which riders in guided vehicles travel through specially-lit scenes that typically contain animation, sound, music, and special effects.

They integrate, for example, 3D animated movie scenes, dynamic-motion cars, 4D disaster simulation, and various live-performance components.

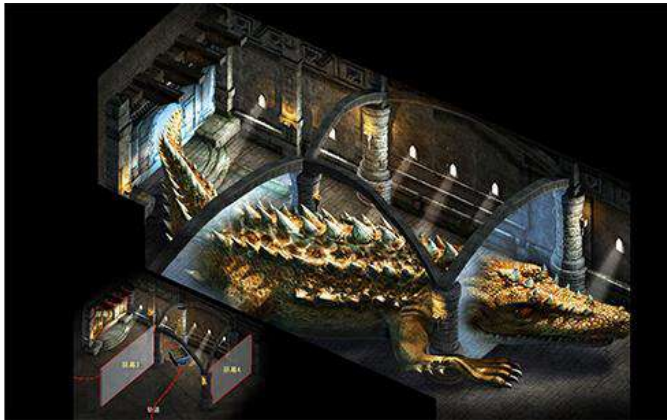
The allure of our dark rides comes from the combination of our dynamic-motion cars, which feature a high degree of freedom of movement, and the multiple silver screens placed throughout the attraction. The combination of these technologies creates a ride that promises non-stop thrills for visitors who thrive on excitement.



AZTURK FUN PARK

5 - INDOOR ATTRACTIONS

4D DARK RIDES



DARK RIDES

Features

1. Multi-degree-of-freedom rail cars provide varied forms of motion, which makes for a most exciting visitor experience.
2. The three-dimensional movie system utilizes multiple screens, giving visitors the sensation of being at the very heart of the action.
3. The combination of life-like dioramas, 3D films, and a broad range of special effects creates an atmosphere ripe for adventure.

Example :

Dino- Rampage
Legend of Nuwa



Confidential document – Reproduction total or partial and redistribution to third part are forbidden without Fantawild & Lom approval



AZTURK FUN PARK

5 - INDOOR ATTRACTIONS

MOTION DARK RIDES



MOTION DARK RIDES are large, elaborate indoor attractions. They are simulators embedded on vehicles traveling on a scenographic circuit including video projections, special effects and animatronics.

The attraction consists of 9 vehicles with 12 seats in 3 rows each traveling on a circuit passing giant screens on which films synchronized with the movements of the vehicle are projected.

A decor of atmosphere creates a scenography in which special effects are added.

The circuit consists of a guide rail and a power supply supplying the engines of each vehicle.



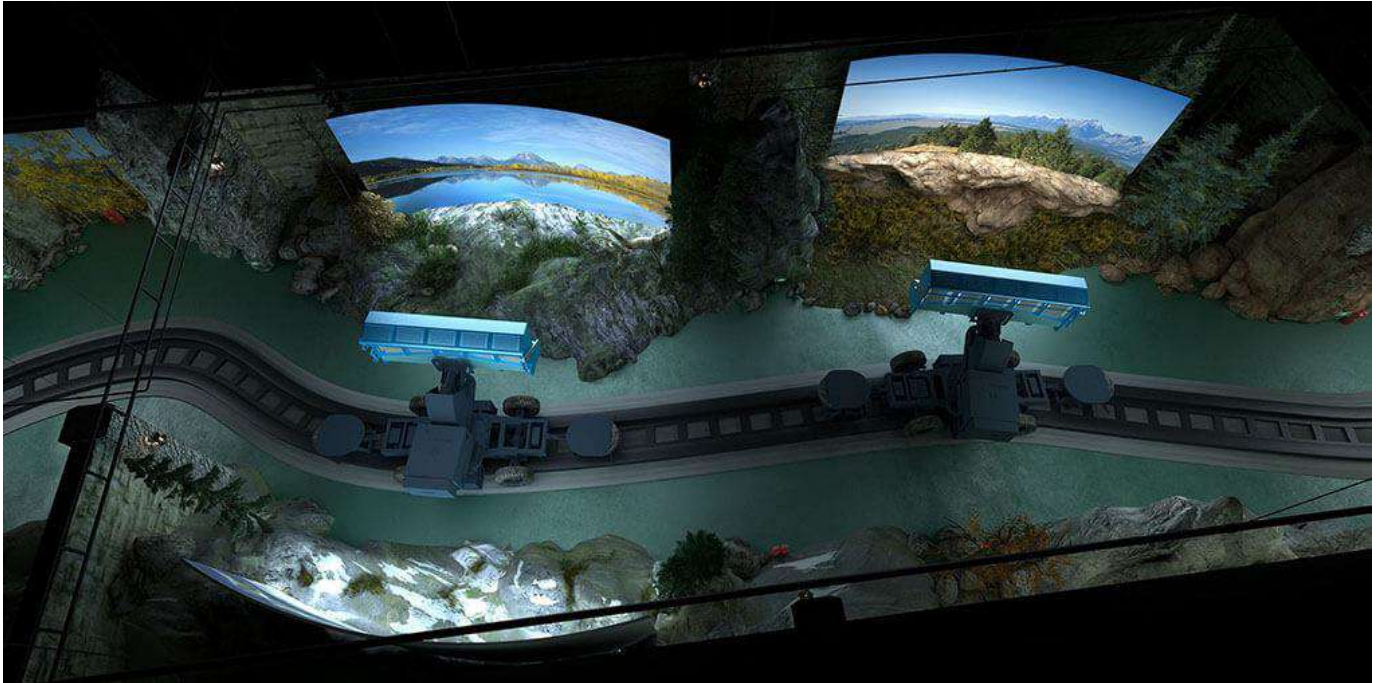
Example :
Qin Dynasty



AZTURK FUN PARK

5 - INDOOR ATTRACTIONS

SIMULATED-FLIGHT (HANGING) RIDES



Using the **multi-degree-of-freedom hanging-car system** to simulate various flying motions, our simulated-flight rides whisk visitors about through breathtaking scenery related to a given story.

On-site live-action scenes, together with special effects and an impressive synchronized rail-and-screen system (featuring the multiple mobile sphere screen) guarantee a ride they'll never forget.



AZTURK FUN PARK

5 - INDOOR ATTRACTIONS

SIMULATED-FLIGHT (HANGING) RIDES



SIMULATED-FLIGHT (HANGING) RIDES

Features

Multi-Degree-of-Freedom Hanging Cars

The hanging-car system consists of large mechanical arms with attached seats; these can simulate a variety of different flying motions

Mobile Sphere Screens

Mobile sphere screens can play continuously when several cars are running at once.

Live-Action Scene + Special Effects + Robots

Large in-house robots operate against a backdrop of vivid special effects to offer visitors a fascinating story-telling experience.



Confidential document – Reproduction total or partial and redistribution to third part are forbidden without Fantawild & Lom approval



AZTURK FUN PARK

5 - INDOOR ATTRACTIONS

SHOOTING DARK RIDE



A shooting dark ride is an interactive type of dark ride where riders aim for targets throughout the ride. Each vehicle is equipped with hand-held or vehicle-mounted light guns.

Successfully "shooting" a target usually triggers special animation such as flashing lights or a moving target. The more targets a rider hits, the higher their score at the end of the ride.





AZTURK FUN PARK

5 - INDOOR ATTRACTIONS

4D ENVIRONMENTAL THEATER



4D Environmental Theater is a large attraction that integrates multiple large screens, elaborate props and mechanical models.

It retains all the features of a traditional 4D theater, but boasts a unique combination of real and virtual imagery and special effects, creating a highly realistic environment related to the story being told.



AZTURK FUN PARK

5 - INDOOR ATTRACTIONS

4D ENVIRONMENTAL THEATER



4D ENVIRONMENTAL THEATER Features

Life-like dioramas and virtual imagery which is visually unified under a single theme.

An abundance of special effects such as robots, suspended props, wind, water, vibration, and fog.

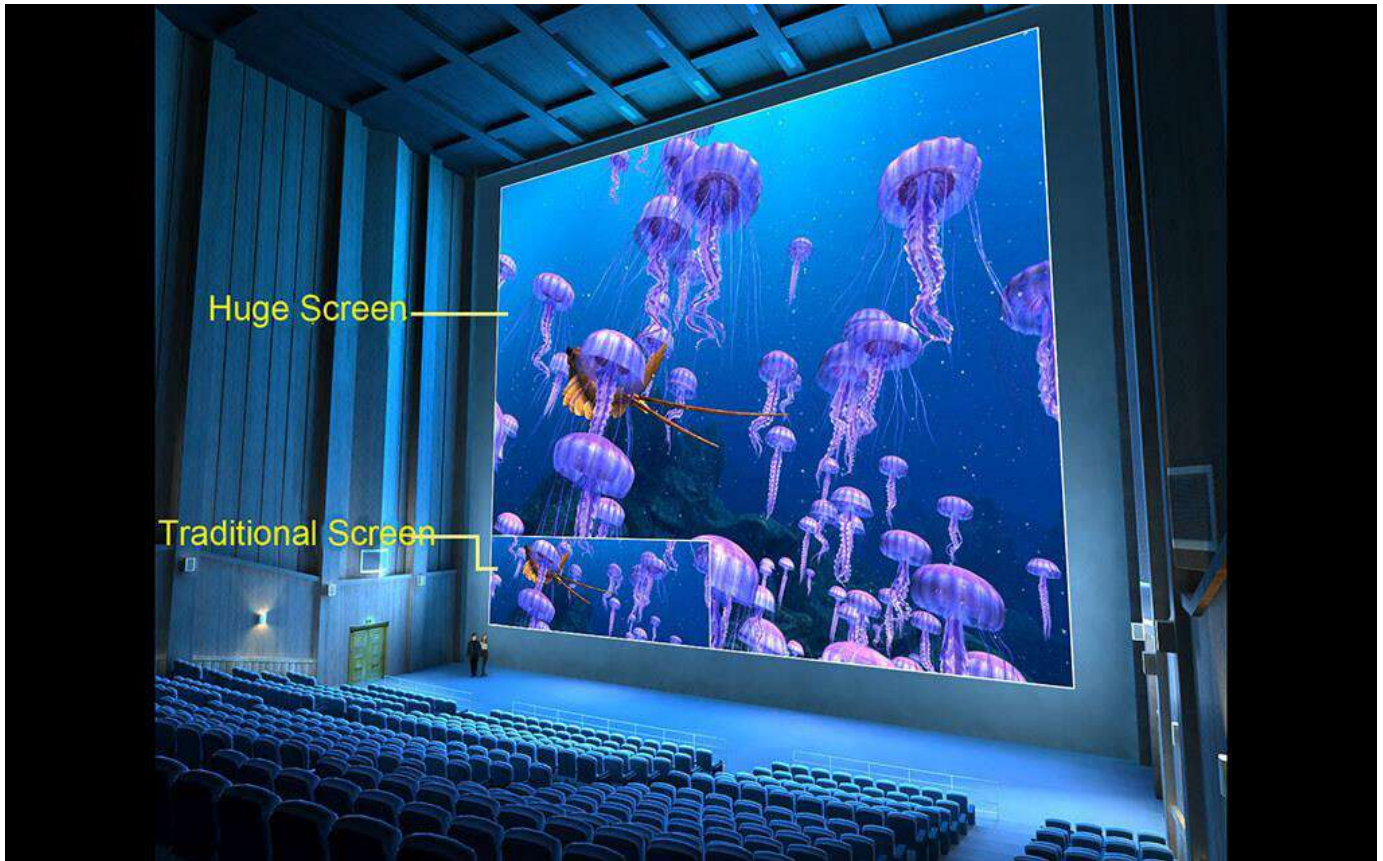




AZTURK FUN PARK

5 - INDOOR ATTRACTIONS

3D HUGE SCREEN THEATER



Our **huge-screen theaters** consist of a huge screen, a sophisticated computer control system, and films recorded in stereo. The supramaximal screen is the basis for a magnificent cinematic experience.



AZTURK FUN PARK

5 - INDOOR ATTRACTIONS

3D HUGE SCREEN THEATER



3D HUGE-SCREEN THEATER

Features

Super output resolution 4096*2160

This screen offers 4 times the resolution of standard 1080p digital high-definition films, making for a vastly improved visual experience.



AZTURK FUN PARK

5 - INDOOR ATTRACTIONS

WATER SCREEN FILMS WITH SPECIAL EFFECTS



Through a sophisticated system centered on continual, pressurized recirculation of water across a wide expanse, a fascinating surface is created on which images may be projected to stunning effect. Upon this unique surface, visuals are clear, colorful, and spectacular, and make for a singular viewing experience.

A Fantawild Water-Screen film's magic is not restricted to the screen itself; there is an indoor drifting component to the mix. This involves live-action scenes, along with the spray of water-guns and astonishing high-tech simulation of floods, tornados, and other natural disasters.



AZTURK FUN PARK

5 - INDOOR ATTRACTIONS

3D HUGE SCREEN THEATER



Water Screen Film

Features

Unusual visual effects play out over a vast, shimmering screen after the manner of a mirage, or the most vivid of dreams.

Case

The White-Snake Maiden's Fury

The pre-show area features an indoor drifting adventure. During that 10-minute odyssey, visitors arranged 200 to a boat find themselves in ancient Hangzhou. They are treated to a lively mix of video, live action, and interactive elements-all in service of the story of the Dragon Boat Festival. The main performance area is the actual water-screen theater, in which our technology allows "Mother Nature" to unleash her fiercest side, as described in the section above. When the featured film arrives at its epic end, the White Snake Maiden and the nefarious monk engage in heated battle at Jinshan Temple-leading to the spray from 1000 tons of rushing water reaching stunned audiences as rolling waves break forth.



AZTURK FUN PARK

5 - INDOOR ATTRACTIONS

AR PERFORMANCE



The **Phantom imaging system** is based on an optical imaging concept integrating "real shape" and "Phantom" technology. This involves projecting captured images of people and objects onto the main component of the modeled landscape.

Special effects designed for the stage greatly enhance the telling of the tale, as fog and other natural conditions are simulated, all to vivid and memorable effect.

Stories are told through the skillful blending of three-dimensional scenes, advanced lighting systems, optical imaging systems, video playback systems, computer multimedia systems, audio system and a general control system,

Confidential document - Reproduction total or partial and redistribution to third part are forbidden without Fantawild & Lom approval



AZTURK FUN PARK

5 - INDOOR ATTRACTIONS

AR PERFORMANCE



Features

- 1.Brand new aluminum-laminated films with true-to-life imaging and amazing stereo effects.
- 2.Special elevating stage, on which light-control technology is employed to effect the illusion of performers suddenly appearing from out of nowhere, and vanishing into thin air at will.

Case Ghost Romance



AZTURK FUN PARK

5 - INDOOR ATTRACTIONS

DOME THEATER WITH MOVABLE SITTING PLATFORM



This is a 3D film show in a large full dome theater which has a huge dome-shaped screen across the ceiling and a movable seating platform.

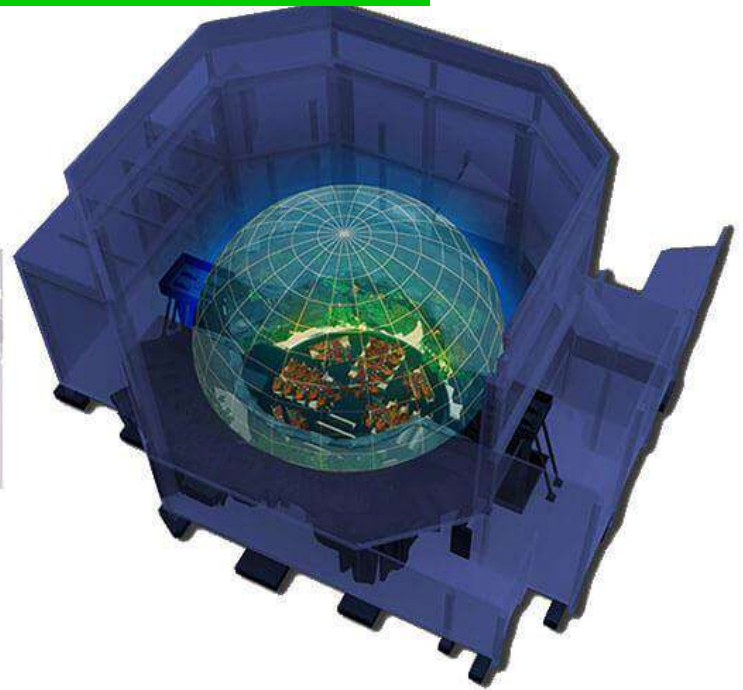
This film, packed with exciting stunts and stunning special effects, tells a story, which is based on the first few chapters of an ancient Chinese novel Journey to the west about how the Monkey King rebels against the Jade Emperor of heaven.



AZTURK FUN PARK

5 - INDOOR ATTRACTIONS

DOME THEATER WITH MOVABLE SITTING PLATFORM



GIANT FULL DOME THEATER FEATURES

This theater has a huge hemisphere-shaped screen up on the ceiling. The screen presents the majestic scene of the sky perfectly. Surrounded by this enormous screen and the impressive sound system, the audience will be totally immersed in this digital HD film produced by a combination of both real shots and three-dimensional synthetic shots.

MOVABLE SITTING PLATFORM

All the seats are installed on this movable seating platform which is able to rotate 360 degrees. The platform will move according to the plot of the film, helping to immerse the audience into the enchanting world created in the film.





AZTURK FUN PARK

5 - INDOOR ATTRACTIONS

CIRCLE VISION 360° THEATER



This 360-degree theater uses a circular screen with the audience seated on a central platform wearing 3D glasses. The platform will revolve slowly while the film is being shown, helping to give the audience a unique experience whereby they feel as if they are being immersed in the world the film is creating.



AZTURK FUN PARK

5 - INDOOR ATTRACTIONS

CIRCLE VISION 360° THEATER

360-degree Circular Screen

The circular screen provides the audience with a 360-degree vision of the 3D film. Surrounded by such a giant screen, the audience may feel like they are inside the film.

Combination of real and 3D synthetic shots

Produced by a combination of both real shots and three-dimensional synthetic shots, the seamless 360-degree screen film presents the audience with breathtaking scenes.

Revolving platform

The revolving audience platform moves according to the plot of the film so that the audience feels like they are really a part of the scenes.

Lifting ceiling

The ceiling will lower or rise according to the plot of the film, which in return creates a more thrilling experience.



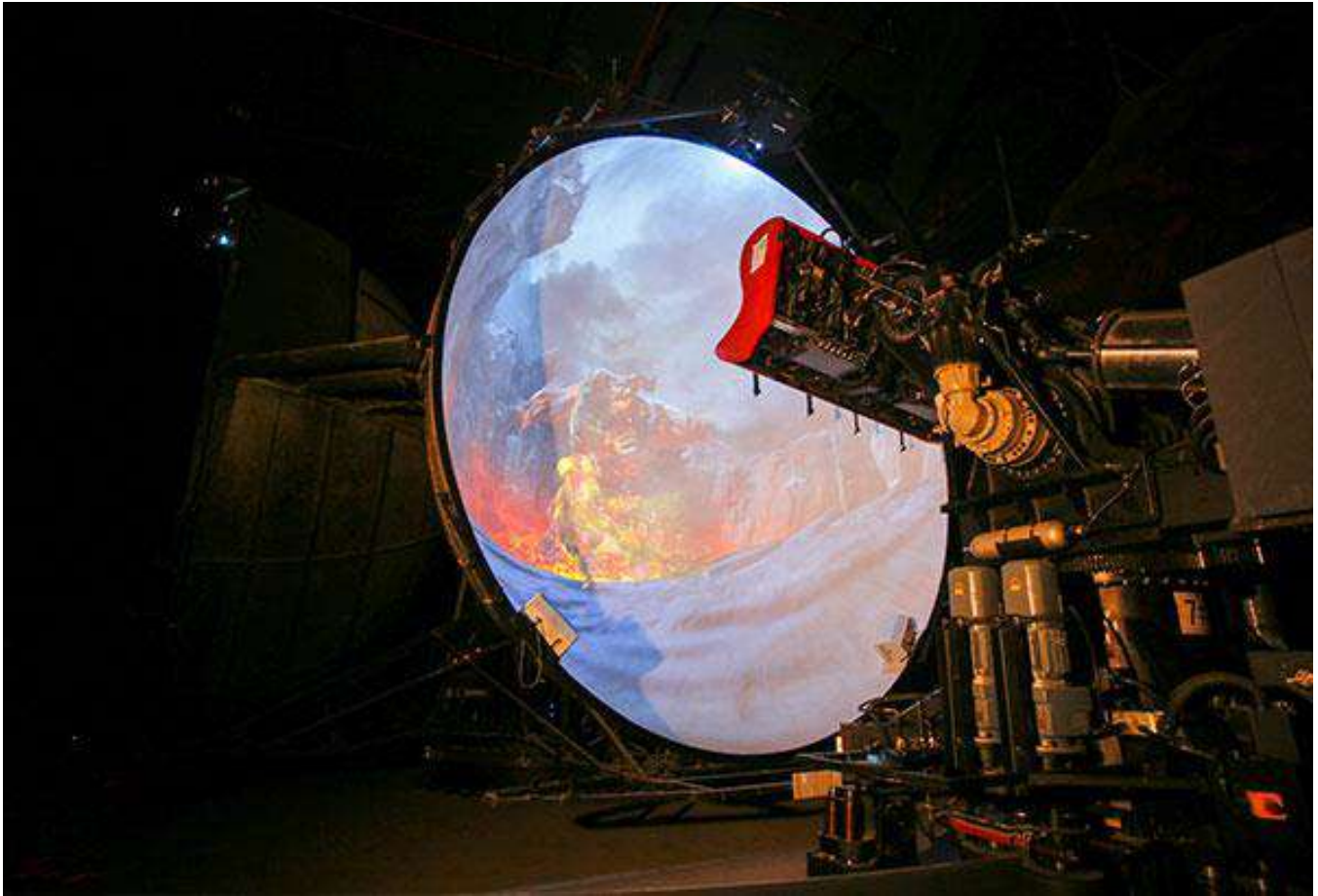
Confidential document – Reproduction total or partial and redistribution to third part are forbidden without Fantawild & Lom approval



AZTURK FUN PARK

5 - INDOOR ATTRACTIONS

MOTION SEATS THEATER WITH HEMISPHERIC SCREEN



This attraction simulates a space journey through a 3D film shown in a full dome theater where the audience will experience a space war while sitting in suspended cabins that move, thus making the journey even more thrilling. With an impressive dome-shaped screen displayed above them, the audience will experience a real visual treat.

Confidential document – Reproduction total or partial and redistribution to third part are forbidden without Fantawild & Lom approval



AZTURK FUN PARK

5 - INDOOR ATTRACTIONS

MOTION SEATS THEATER WITH HEMISPHERIC SCREEN



HUGE FULL DOME THEATER FEATURES

Covered by a colossal hemisphere-shaped screen that presents them with the vast universe, the audience will sit in seats arranged in several suspended cabins, making them feel as if they're floating in the mysterious world of outer space as the suspended cabins move around inside the theater.

Suspended Seats and Flight Simulation

The theater creates a flying experience for the audience due to all of the amazing special effects in this film and the design of suspended seats which can carry the audience around in the air.

Digital HD Film

The high definition of this film and the surround sound combine to present a feast for all the senses. The audience will find themselves completely immersed in the film so that everything they see or hear will feel as if it's really happening all around them.



AZTURK FUN PARK

5 - INDOOR ATTRACTIONS

MAD HOUSE



FEATURE:

- 78 PASSENGERS
- CAPACITY: 1600 pph

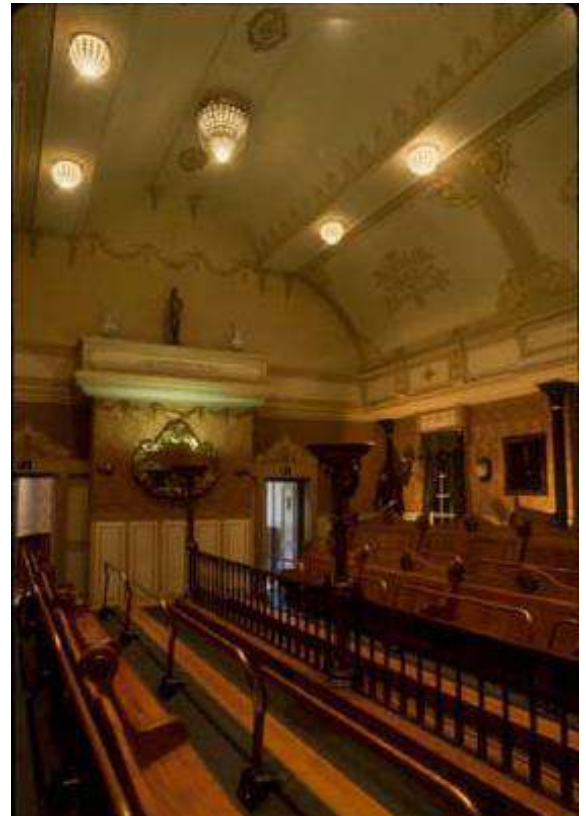
THE THEME:

- CULTURAL TWIST

The **MAD HOUSE** is an attraction consisting of a huge swing surrounded by a themed barrel that turns separately.

It is therefore possible to deceive the perspectives by rotating the scenery at the same time as the pendulum movement, suggesting that one does not move while one is going up or down.

Suddenly the swing is released and the scenery also begins to turn, accentuating the effect of being caught in an infernal mastrum where everything moves without understanding where the horizon is.



Confidential document – Reproduction total or partial and redistribution to third part are forbidden without Fantawild & Lom approval

AZTURK FUN PARK

5 - INDOOR ATTRACTIONS

MAGIC BEASTS RIDE



FEATURE:

- 32 PASSENGERS
- 2,5 M HEIGHT
- TRACK: 200 m

THE THEME:

- UNICORN

MAGIC BEASTS is a new attraction with horses running in a scenic ride.

It's the magical of Mary Poppins carousel.

Horses go up and down along a trail. Each of them runs separately on four different tracks.

Scenic theme around bring amusement and fun in a competitive race between all a family.



AZTURK FUN PARK

5 - INDOOR ATTRACTIONS

DUCK CAROUSEL



THE FIGURES:

- 8 GONDOLAS
- 32 PASSENGERS

THE THEME:

- DUCKS

DUCK CAROUSEL is an aquatic merry-go-round with gondolas themed as ducks, which combines a gentle circular movement on the water with a vertical oscillation reproducing a trip into the water.

Children and families enjoy this attraction, giving them the opportunity to ride a giant bird like in The Wonderful Adventures of Nils.





AZTURK FUN PARK

5 - INDOOR ATTRACTIONS

DEMOLITION DERBY



FEATURE:

- 8 cars x 4
- 32 PASSENGERS

THE THEME:

- TRICERATOPS EGG

DEMOLITION DERBY is an attraction which is composed of two platforms swirling in two opposite direction upon which themed gondolas are circulating from one to the other of the two platforms and based on a traffic on a 8-shaped track. Each gondolas revolve on themselves strengthening a dizzy effect in an erratic traffic. The attraction has 6 gondolas for 4 passengers each.

Each gondola is themed as a cartoon triceratops egg.





AZTURK FUN PARK

5 - INDOOR ATTRACTIONS

TEA CUP



FEATURE:

- 9 GONDOLAS
- 32 PASSENGERS

THE THEME:

- TEA

TEA CUP attraction consists of 9 themed gondolas spinning on themselves with a tea-pot decoration in the center.

These gondolas allow 32 passengers to board. They are fixed on 3 rotating platforms, which are themselves installed on a rotating plate turning in the opposite direction.

Each vehicle is equipped with a steering wheel placed at the center which allows the passengers to turn it in the direction they wish.

In the end, there are 3 different gyratory senses that the passengers will face in an immense whirlwind of fun and amusement.





AZ TURK FUN PARK

5 - INDOOR ATTRACTIONS

AVIO RIDE



AVIO is a merry go round ride which allows passengers to feel a small **drop like sensation** by the **up and down movement** of the arms.

The **movable arms** are **electronically controleded** for up and down movement. The **ride motion types** are **customizable** and can be **selected during the ride operation**. The attraction is composed from **14 movable arms** that allows the vehicles to go up and down along the revolution. The ride is designed to board 2 passengers per arm; the total ride capacity is **28 passengers**.

FEATURE:

- 14 GONDOLAS
- 28 PASSENGERS

THE THEME:

- PLANES





AZTURK FUN PARK

5 - INDOOR ATTRACTIONS

CAROUSEL



FEATURE:

- 2 STOREYS
- 10m DIAMETER
- 62 PASSENGERS
- CAPACITY: 900 pph

THE THEME:

- ANIMALS

No amusement park is complete without a **CAROUSEL**. In the Indoor Theme Park we have taken the beloved and classic amusement ride and given it a unique spin. With a fantastic variety of animals this Carousel is sure to delight!



Confidential document – Reproduction total or partial and redistribution to third part are forbidden without Fantawild & Lom approval



AZTURK FUN PARK

5 - INDOOR ATTRACTIONS

TOWER



FEATURE:

- HEIGHT: 13 m
- 4 GONDOLAS
- 16 PASSENGERS
- CAPACITY: 480 pph

THE THEME:

- BOATS

The emotional thrills of dropping from high above in the air is boundless with unknown limitation. Riders sitting in one of the gondolas are going to encounter an open-air of speed acceleration to the top of this tower at extreme level of exciting and associate with a emotional delightful feeling of great achievement from their courage and having the Spartan spirit of bravery on taking this rides, as any earthbound man can.

The height of this impressive rides is going to reward the riders with the chance of viewing and enjoying the breathtaking magical panorama scenario attractions around and far away from the horizon before another round of dropping adventurous trip with moderate increase of adrenaline rush and back to the landing station.





AZTURK FUN PARK

5 - INDOOR ATTRACTIONS

FLYING SWINGER



FEATURE:

- HEIGHT: 14 m
- DIAMET 18 m
- 48 PASSENGERS
- CAPACITY: 960 pph

THE THEME:

- FALCON

The **FLYING SWINGER** represents one of the most popular funny attraction.

Passengers, seated on chairs, have the sensation to fly around the ride, thanks to a gentle wave effect: this is due to its double rotational movements and to the column inclination.

During the ride the top segment of the column is inclined by a vertical axis, locating the rotational plane of the roof with a 14° inclination with respect to the horizontal plane and this gives the waving motion.





AZTURK FUN PARK

6 - OUTDOOR ATTRACTIONS

LAUNCH COASTER



FEATURE:

- TRACK: 1000 m
- HEIGHT: 137 m
- 2 TRAINS
- CAPACITY: 1400 pph

THE THEME:

- TRAIN COMPETITION

Our **LAUNCH COASTER** is an accelerator coaster. It is designed to provide maximum adrenaline by ensuring maximum speed in the shortest possible time on the greatest height ever reached by a roller coaster.

With the use of a hydraulic winch launch system acceleration is continuous throughout the training period. The braking is soft and is done by magnetic brakes.

The height will be 130 meters (highest in the world), with 2 trains. The launch zone will be downstream from the station, allowing the launching area to be themed and the second train waiting to be loaded into the station.





AZTURK FUN PARK

6 - OUTDOOR ATTRACTIONS

GIANT SWIRL



FEATURE:

- 100 m HEIGHT
- 24 SEATS

THE THEME:

- A LIGHTHOUSE

GIANT SWIRL is a flying seat attraction over **100 m tall**. Looking out, passengers can see for kilometers; looking down, they are reminded how far the ground is below them. This attraction is built on the principle that flying is fun for everyone.

The passengers enter open-air seats that can only be unlocked by the attendant.

After being secured, all seats lift into the air and the ride begins to spin.

Soon the din of the site melts away, and all riders hear is the clanking of chains, whir of the motor and squeals of fellow passengers. As guests spin, they look around and meet eye-to-eye with....the birds.

This is a great combination of attractions, serving as a:

- **Thrill attraction**
- **Park Icon**
- **Observation Tower**





AZTURK FUN PARK

6 - OUTDOOR ATTRACTIONS

GIANT WHEEL



FEATURE:

- HEIGHT: 53 m
- 36 GONDOLAS
- 216 PASSENGERS

THE THEME:

- WHEEL

A panoramic wheel is the main attraction that is one of the most characteristic of all tourist attractions of a park. This not only for its structural beauty but also for the panoramic view it offers over the city due to its height.

The Wheel, in operating conditions is complete with:

Main Support Frame:

Manufacturing of the Main Support Frame. Design and all main information main maintenance platform and safety stairways.

Rotating Structure

The rotating structure will be completed with the following parts: main central axle; arms directly connected to the axle; rings of spreader bars; circumference track or rim.

Cabins

36 Closed Gondolas, maximum 6 passengers each.





AZTURK FUN PARK

6 - OUTDOOR ATTRACTIONS

ORBITAL DISCOVERY



FEATURE:

- 45 m HEIGHT
- 40 SEATS
- CAPACITY: 900 pph

THE THEME:

- ROTATING WHEEL SPACE STATION

The **ORBITAL DISCOVERY** attraction is a sensational ride experience with speed, acceleration and airtime, reproducing the weightlessness training in a rotating wheel space station

With its hub height of 27m and a maximum passenger flying height of 45m, four gigantic legs hold a mighty pendulum that swings 120° to each side while at the same time the gondola on the lower end rotates at 8rpm. The pendulum accelerates up to 110km/h at +4.5g, parameters that are normally associated with major roller coasters.

The gondola accommodates 40 passengers, offers suspended, floorless seats and provides additional exciting feelings while swinging high above the ground.





AZTURK FUN PARK

6 - OUTDOOR ATTRACTIONS

STAR CRUISER TOP SPIN



FEATURE:

- HEIGHT: 17 m
- 38 SEATS
- CAPACITY: 760 pph

THE THEME:

- STAR CRUISER

STAR CRUISER TOP SPIN guarantees exciting, extreme thrill ride experiences for passengers in a starship landing in battle ground. The attraction has 38 seats in a back-to-back arrangement in which each seat row faces the opposite direction to the other.

The suspended seat configuration offers the thrilling experience of freedom in the floorless gondola and enhances accessibility from both sides, shortening loading/unloading times.

The **STAR CRUISER TOP SPIN** features various ride patterns, including pendulum movements of the gondola, circular rotations of the gondola in any position and sudden turns after the release of the drum brake, as well as multiple spins of the gondola around its suspension axis.





AZTURK FUN PARK

6 - OUTDOOR ATTRACTIONS

COSMIC RAY ROLLER COASTER



FEATURE:

- TRACK : 250 M
- HEIGHT: 35 M
- 60 KM/H
- 40 PASSENGERS

THE THEME:

- COSMIC RAY

The **COSMIC RAY ROLLER COASTER** 's design provides a whole collection of unusual sensations, starting with a spur of acceleration up an incline, followed by a sense of total weightlessness, head over heels spinning, freefall drops, and hearts stopping swings back and forth.

The eight guests, seated back to back, are suspended outside the rails and hang on each side of the track. As the swinging and spinning action is heavily dependent on the load distribution within the vehicles the ride experience is never predictable.





AZTURK FUN PARK

6 - OUTDOOR ATTRACTIONS

MONORAIL



FEATURE:

- 10 VEHICLES
- HEIGHT: 4 m
- 40 PASSENGERS

THE THEME:

- PLANES

The **MONORAIL** is an aerial attraction consisting of a rail about 4 meters high on which move 10 themed vehicles. The boarding station allows embarkation on one side and descent on the other.

The gondolas are made of fiberglass reinforced polyester and mounted on a metal frame.

Vehicles are powered by electric motors ..
With this means of transport passengers can have a vision of the park in height while being serenely seated





AZTURK FUN PARK

6 - OUTDOOR ATTRACTIONS

4 X 4 EXPLORER RIDE



FEATURE:

- 8 cars x 4
- 32 passengers

THE THEME:

- Dinosaur

4x4 EXPLORER is a ride with 8 themed vehicles running in a Jurassic reserve. Total capacity is 32 with 4 passengers by vehicle.

Each car running individually is provided with one motor, power pick up to allow the contact with the centre guide line of the track, safety belt, lights, trumpets and twin wheels. Photoelectric cells to stop cars on station, electric panel and rectifier included.





AZTURK FUN PARK

6 - OUTDOOR ATTRACTIONS

RAFTING



FEATURE:

- 16 BOATS
- 32 PASSENGERS
- TRACK: 600 m
- CAPACITY: 1536 pph

THE THEME:

- WATERFALL

RAFTING is an aquatic attraction that reproduces the pleasure and excitement of canoeing, in buoys within a torrent made of individual drops of water. It is made up of a hydraulic circuit with elevations in which the themed buoys, which can accommodate passengers, circulate freely. While moving in the canal, the buoys rotate on themselves by hitting the walls of the canal.

The circulation of water in the canal is generated by submersible pumps which drive the buoys in the water course.

Treadmills bring the buoys to the station and to the upper part of the hydraulic circuit.

This attraction is full of excitement and joy with splashes that wet everyone.



AZTURK FUN PARK

6 - OUTDOOR ATTRACTIONS

FLUME RIDE



FEATURE:

- 15 BOATS
- 60 PASSENGERS
- 4 LIFTS & DOWNFALLS

THE THEME:

- CAVE & MONTAIN

The **FLUME RIDE** is an aquatic attraction where the passengers take places in themed boat and move in a canal with lifts and falls ensuring splashes and sensations.

Thanks to treadmills in the canal, the boats are lifted and suddenly plunge in a pool giving an airlift sensation and amazing enjoyment during the downfall. In the canal, the water is gently moved by hydraulic pumps. This movement brings the boats into a course full of sensations and wonder.





AZTURK FUN PARK

6 - OUTDOOR ATTRACTIONS

DUELLING COASTER



FEATURE:

- TRACK: 570 m
- HEIGHT: 12 m
- 6 TRAINS
- 48 PASSENGERS
- CAPACITY: 900 pph

THE THEME:

- TRAIN COMPETITION

The **DUELLING COASTER** is a double course of two trains running different routes but which run on the same rail.

The attraction has two boarding docks. Passengers embark on one of the platforms and arrive on the other. Each train has a course that begins next to each other and then separates in the course. It is a surprising route, full of competition and sensations.



Confidential document – Reproduction total or partial and redistribution to third part are forbidden without Fantawild & Lom approval



AZTURK FUN PARK

6 - OUTDOOR ATTRACTIONS

SKYBAR



- FEATURE:**
- HEIGHT: 40 m
 - 12 PASSENGERS
- THE THEME:**
- BALLOON

The **SKYBAR** is a new attraction combining a trip in height and the sharing of a soft drink between friends in an airborne bar. It is a panoramic attraction.

A 12-seat gondola with a bar in the center rises up in a tower made of guide rails and decorated by a captive balloon.

Passengers sit on secure seats, feet in the air and order at the bar in front of them. They share a drink during the ascent and for the duration of the stop time at the 40-meter summit.



Confidential document – Reproduction total or partial and redistribution to third part are forbidden without Fantawild & Lom approval



AZTURK FUN PARK

6 - OUTDOOR ATTRACTIONS

VULCAN TRAIN



Providing passengers with a 21st century, safe, comfortable and environmentally friendly transit experience, the Vulcan ticks all the boxes. The flexible modular system allows a convenient range of capacities possible from 64 through to 224.

- FEATURE:**
- 3 TRAINS
 - 64 TO 224 PASSENGERS/TRAIN
 - SPEED: 16 Km/h
 - ENCLOSED WITH AIRCON COMPARTMENTS





AZTURK FUN PARK

7 - BUDGET PRICES

ATTRACTIONS			Euros without taxes		
N°	Attraction	Quantity	Budget price	Installation	Transport
1	Suspended Spherical Theater	1	22 650 000	2 265 000	250 000
2	4D Dark Ride	1	17 730 000	1 773 000	250 000
3	Motion Dark Ride	1	18 150 000	1 815 000	250 000
4	Simulated Flight	1	30 150 000	3 015 000	250 000
5	Shooting Dark ride	1	4 200 000	420 000	250 000
6	4D environmental Theater	1	10 650 000	1 065 000	250 000
7	3D Huge Screen Theater	1	7 650 000	765 000	250 000
8	Water Screen + Special Effects	1	22 650 000	2 265 000	250 000
9	AR Performance	1	12 150 000	1 215 000	250 000
10	Dome Theater	1	22 650 000	2 265 000	250 000
11	360° Theater	1	9 150 000	915 000	250 000
12	Motion Seats Theater	1	15 150 000	1 515 000	250 000
13	Launch Coaster	1	37 650 000	3 765 000	500 000
14	Giant swirl	1	4 500 000	450 000	150 000
15	Ferry Wheel	1	3 900 000	702 000	125 000
16	Orbital Discovery	1	2 400 000	192 000	55 000
17	Star cruiser Top Spin	1	3 450 000	276 000	55 000
18	Cosmic Ray Roller Coaster	1	9 900 000	792 000	125 000
19	Monorail	1	1 170 000	93 600	50 000
20	Explorer Ride	1	2 100 000	168 000	50 000
21	Rafting	1	2 850 000	228 000	50 000
22	Flume ride	2	4 650 000	372 000	50 000
23	Duelling Coaster	1	3 450 000	276 000	100 000
24	Sky Bar	1	1 425 000	114 000	50 000
25	Vulcan Train	1	2 700 000	216 000	100 000
26	Mad House	1	2 850 000	228 000	25 000
27	Magic Beasts ride	1	4 050 000	324 000	50 000
28	Duck Carrousel	1	600 000	90 000	20 000
29	Demolition Derby	1	975 000	97 500	20 000
30	Tea Cup	1	750 000	75 000	20 000
31	Avio Ride	1	1 050 000	105 000	20 000
32	Merry go Round arousel	1	1 350 000	135 000	25 000
33	Tower	1	675 000	67 500	20 000
34	Flying Swinger	1	915 000	91 500	30 000
Total Budget Euros without taxes			286 290 000	28 151 100	4 690 000

Attraction budgets are indicative and must be precisely defined after the preliminary studies according with the number of visitors expected and the specific theming.
ransport cost are indicative. A specific cotation must be done according with the logistic way.



AZTURK FUN PARK

7 - BUDGET PRICES

DECORATION & SPECIAL EFFECTS		Euros without taxes			
N°	Attraction	Decoration	Special Effects	Decoration & Special Effects Installation	Decoration & Special Effects Transport
1	Suspended Spherical Theater	450 000	included	135 000	20 000
2	4D Dark Ride	4 500 000		1 350 000	100 000
3	Motion Dark Ride	4 500 000		1 350 000	100 000
4	Simulated Flight	7 500 000		2 250 000	100 000
5	Shooting Dark ride	1 500 000		450 000	25 000
6	4D environmental Theater	1 200 000		360 000	20 000
7	3D Huge Screen Theater	450 000		135 000	15 000
8	Water Screen + Special Effects	3 000 000		900 000	100 000
9	AR Performance	450 000		135 000	100 000
10	Dome Theater	1 500 000		450 000	50 000
11	360° Theater	750 000		225 000	25 000
12	Motion Seats Theater	450 000		135 000	25 000
13	Launch Coaster	750 000	150 000	270 000	25 000
14	Giant swirl	450 000	150 000	180 000	10 000
15	Ferry Wheel	150 000	150 000	90 000	10 000
16	Orbital Discovery	150 000	150 000	90 000	10 000
17	Star cruiser Top Spin	1 200 000	450 000	495 000	25 000
18	Cosmic Ray Roller Coaster	150 000	150 000	90 000	10 000
19	Monorail	450 000	150 000	180 000	10 000
20	Explorer Ride	1 500 000	750 000	675 000	25 000
21	Rafting	4 500 000	1 500 000	1 800 000	40 000
22	Flume ride	7 500 000	3 000 000	3 150 000	100 000
23	Duelling Coaster	1 500 000	150 000	495 000	25 000
24	Sky Bar	150 000	150 000	90 000	10 000
25	Vulcan Train	750 000	300 000	315 000	20 000
26	Mad House	1 500 000	300 000	540 000	25 000
27	Magic Beasts ride	1 500 000	1 200 000	810 000	25 000
28	Duck Carrousel	300 000	75 000	112 500	10 000
29	Demolition Derby	300 000	75 000	112 500	10 000
30	Tea Cup	300 000	75 000	112 500	10 000
31	Avio Ride	300 000	75 000	112 500	10 000
32	Merry go Round arousel	150 000	75 000	67 500	10 000
33	Tower	300 000	75 000	112 500	10 000
34	Flying Swinger	300 000	75 000	112 500	10 000
Total Budget Euros without taxes		50 400 000	9 225 000	17 887 500	1 120 000

Decoration and special effects costs are estimative and must be precisely defined after detail design engineering. Transports for the decorations and special effects are based on 5000 euros by container 40 feet OT from Europe and Asia to destination. Transport cost are indicative. A specific cotation must be done according with the logistic way.



AZTURK FUN PARK

7 - BUDGET PRICES

CIVIL WORKS & CONSTRUCTION		Euros excluding taxes	
N°	Attractions & Buildings	Area (m ²)	TOTAL BUDGET
1	Suspended Spherical Theater	6 000	15 000 000
2	4D Dark Ride	9 000	21 750 000
3	Motion Dark Ride	11 000	26 250 000
4	Simulated Flight	9 000	21 750 000
5	Shooting Dark ride	2 000	6 000 000
6	4D environmental Theater	2 000	6 000 000
7	3D Huge Screen Theater	5 000	12 750 000
8	Water Screen + Special Effects	15 000	35 250 000
9	AR Performance	6 000	15 000 000
10	Dome Theater	4 000	10 500 000
11	360° Theater	3 000	8 250 000
12	Motion Seats Theater	4 000	10 500 000
13	Launch Coaster	-	11 250 000
14	Giant swirl	-	1 305 000
15	Ferry Wheel	-	1 125 000
16	Orbital Discovery	-	675 000
17	Star cruiser Top Spin	-	990 000
18	Cosmic Ray Roller Coaster	-	2 925 000
19	Monorail	-	408 000
20	Explorer Ride	-	585 000
21	Rafting	-	5 400 000
22	Flume ride	-	7 200 000
23	Duelling Coaster	-	990 000
24	Sky Bar	-	510 000
25	Vulcan Train	-	5 100 000
26	Mad House (budget for the building)	15 000	34 830 000
27	Magic Beasts ride		1 560 000
28	Duck Carrousel		180 000
29	Demolition Derby		330 000
30	Tea Cup		240 000
31	Avio Ride		360 000
32	Merry go Round arousel		480 000
33	Tower		210 000
34	Flying Swinger		306 000
35	Shops, restaurant, buildings		8 500
36	Operation service building	10 000	25 200 000
Total Budget Euros excluding taxes		91 000	321 534 000

Civil work and construction budgets are indicative and must be precisely defined after the detail drawing engineering work.

All special civil works for the attractions and supervision are supervise by our technicians.



AZTURK FUN PARK

7 - BUDGET PRICES

ROADS & PLAZZAS		Euros excluding taxes	
N°	Attractions	Estimated Area (m ²)	TOTAL BUDGET
1	Entrance	11 850	6 510 000
2	Main Street	5 963	2 977 500
3	Technical Services	33 963	15 577 500
4	Suspended Spherical Theater	800	360 000
5	4D Dark Ride	879	407 100
6	Motion Dark Ride	800	360 000
7	Simulated Flight	800	360 000
8	Shooting Dark ride	879	407 100
9	4D environmental Theater	800	360 000
10	3D Huge Screen Theater	800	360 000
11	Water Screen + Special Effects	879	407 100
12	AR Performance	800	360 000
13	Dome Theater	800	360 000
14	360° Theater	879	407 100
15	Motion Seats Theater	800	360 000
16	Launch Coaster	879	407 100
17	Giant swirl	800	360 000
18	Ferry Wheel	800	360 000
19	Orbital Discovery	879	407 100
20	Star cruiser Top Spin	800	360 000
21	Cosmic Ray Roller Coaster	800	360 000
22	Monorail	879	407 100
23	Explorer Ride	800	360 000
24	Rafting	800	360 000
25	Flume ride	879	407 100
26	Duelling Coaster	800	360 000
27	Sky Bar	800	360 000
28	Vulcan Train	879	407 100
29	Mad House	1 114	548 400
30	Magic Beasts ride	800	360 000
31	Duck Carrousel	800	360 000
32	Demolition Derby	800	360 000
33	Tea Cup	800	360 000
34	Avio Ride	800	360 000
35	Merry go Round arousel	800	360 000
36	Tower	800	360 000
37	Flying Swinger	800	360 000
Total Budget Euros excluding taxes		79 996	37 917 300

Roads and plazas budgets are indicative and must be precisely defined after the detail drawing engineering work.



AZTURK FUN PARK

7 - BUDGET PRICES

LANDSCAPE & NETWORK		Euros excluding taxes	
N°	Item	Estimated Area (m ²) & Length (m)	TOTAL BUDGET
1	landscaping	60000	9 000 000
2	Electrical Network	10000	3 000 000
3	Water Network	10000	4 500 000
4	Sewage Network	10000	4 500 000
5	Rain Network	10000	6 000 000
6	Irrigation Network	12000	3 600 000
7	Sewage station	1	1 500 000
8	Electrical sub station	1	300 000
9	Electric group	2	450 000
Total Budget Euros excluding taxes			32 850 000

Landscape & Networks budgets are indicative and must be precisely defined after the detail drawing engineering work.



AZTURK FUN PARK

7 - BUDGET PRICES

ADDITIONAL EQUIPMENT		Euros excluding taxes			
N°	Item	Quantity	Budget price	Installation	Transport
1	Turnstile RFID reader	20	180 000	54 000	5 000
2	Service Gates	10	750 000	225 000	15 000
3	RFID bracelet	10000000	30 000 000	9 000 000	5 000
4	RFID equipment	100	600 000	180 000	5 000
5	Public Lightings	300	540 000	162 000	50 000
6	Public sound system	200	300 000	90 000	10 000
7	Public spot	500	375 000	112 500	5 000
8	Trash cans	200	210 000	63 000	15 000
9	Urban furniture (benches)	200	300 000	90 000	15 000
10	Food & Beverage themed kiosk	30	2 250 000	675 000	75 000
11	Kitchen	10	1 500 000	450 000	15 000
12	Restaurant furniture	10	3 000 000	900 000	50 000
13	Shops	15	2 250 000	675 000	50 000
14	Service equipment	1	1 500 000	450 000	50 000
15	Service furniture	1	1 500 000	450 000	25 000
16	Anti Lighting devices	100	75 000	22 500	5 000
17	Warning indications & maps	200	600 000	180 000	10 000
18	Themed entrance with gates	1	3 000 000	900 000	50 000
19	First aid equipment	1	30 000	9 000	5 000
20	Fire extinguishers	500	75 000	22 500	5 000
21	Fences (estimated)	4000	900 000	270 000	100 000
Total Budget Euros excluding taxes			49 935 000	14 980 500	565 000

Fences, queue files railing and ticketing budget are indicative and must be precisely defined after the detail drawing engineering work according with the land site and the expected number of attractions and visitors.



AZTURK FUN PARK

7 - BUDGET PRICES

ENGINEERING

ENGINEERING		Euros excluding taxes						
N°	Attraction	Preliminary study & concept design	Preliminary Design	Detailed Design	Construction design	Supervision	Test & documentations	Total Budget
1	Suspended Spherical Theater	12 000 000	693 000	1 039 500	1 386 000	346 500	173 250	3 638 250
2	4D Dark Ride		666 900	1 000 350	1 333 800	333 450	166 725	3 501 225
3	Motion Dark Ride		679 500	1 019 250	1 359 000	339 750	169 875	3 567 375
4	Simulated Flight		1 129 500	1 694 250	2 259 000	564 750	282 375	5 929 875
5	Shooting Dark ride		171 000	256 500	342 000	85 500	42 750	897 750
6	4D environmental Theater		355 500	533 250	711 000	177 750	88 875	1 866 375
7	3D Huge Screen Theater		243 000	364 500	486 000	121 500	60 750	1 275 750
8	Water Screen + Special Effects		769 500	1 154 250	1 539 000	384 750	192 375	4 039 875
9	AR Performance		378 000	567 000	756 000	189 000	94 500	1 984 500
10	Dome Theater		724 500	1 086 750	1 449 000	362 250	181 125	3 803 625
11	360° Theater		297 000	445 500	594 000	148 500	74 250	1 559 250
12	Motion Seats Theater		468 000	702 000	936 000	234 000	117 000	2 457 000
13	Launch Coaster		1 156 500	1 734 750	2 313 000	578 250	289 125	6 071 625
14	Giant swirl		153 000	229 500	306 000	76 500	38 250	803 250
15	Ferry Wheel		126 000	189 000	252 000	63 000	31 500	661 500
16	Orbital Discovery		81 000	121 500	162 000	40 500	20 250	425 250
17	Star cruiser Top Spin		153 000	229 500	306 000	76 500	38 250	803 250
18	Cosmic Ray Roller Coaster		306 000	459 000	612 000	153 000	76 500	1 606 500
19	Monorail		53 100	79 650	106 200	26 550	13 275	278 775
20	Explorer Ride		130 500	195 750	261 000	65 250	32 625	685 125
21	Rafting		265 500	398 250	531 000	132 750	66 375	1 393 875
22	Flume ride		454 500	681 750	909 000	227 250	113 625	2 386 125
23	Duelling Coaster		153 000	229 500	306 000	76 500	38 250	803 250
24	Sky Bar		51 750	77 625	103 500	25 875	12 938	271 688
25	Vulcan Train		112 500	168 750	225 000	56 250	28 125	590 625
26	Mad House		139 500	209 250	279 000	69 750	34 875	732 375
27	Magic Beasts ride		202 500	303 750	405 000	101 250	50 625	1 063 125
28	Duck Carrousel		29 250	43 875	58 500	14 625	7 313	153 563
29	Demolition Derby		40 500	60 750	81 000	20 250	10 125	212 625
30	Tea Cup		33 750	50 625	67 500	16 875	8 438	177 188
31	Avio Ride		42 750	64 125	85 500	21 375	10 688	224 438
32	Merry go Round arousal		47 250	70 875	94 500	23 625	11 813	248 063
33	Tower		31 500	47 250	63 000	15 750	7 875	165 375
34	Flying Swinger		38 700	58 050	77 400	19 350	9 675	203 175
35	Civil works & construction		9 646 020	14 469 030	19 292 040	4 823 010	2 411 505	50 641 605
36	Roads		1 137 519	1 706 279	2 275 038	568 760	284 380	5 971 975
37	Landscape & networks		985 500	1 478 250	1 971 000	492 750	246 375	5 173 875
38	Additional Equipment		1 498 050	2 247 075	2 996 100	749 025	374 513	7 864 763
Total Budget Euros excluding taxes		12 000 000	23 644 539	35 466 809	47 289 078	11 822 270	5 911 135	136 133 830

Engineering budget are indicative and must be precisely defined after the preliminary studies and concept design engineering work according with the land site and the expected number of attractions and visitors.



AZTURK FUN PARK

7 - BUDGET PRICES

THEME PARK BUDGET IN TURNKEY	TOTAL Euros	%
Attractions and kiosks	286 290 000	28,9%
Decoration	50 400 000	5,1%
Special effects	9 225 000	0,9%
Civil works & Construction	321 534 000	32,4%
Roads & piazzas	37 917 300	3,8%
Landscape & Networks	32 850 000	3,3%
Additional equipment	49 935 000	5,0%
Installation	61 019 100	6,2%
Transport	6 375 000	0,6%
Engineering	136 133 830	13,7%
Total euros excluding taxes	991 679 230	100%

All the budget quotation are in Euros excluding VAT and others taxes

Our AZERBAIJAN FUN PARK total budget price includes:

- All the attractions as described in the above presentation.
- All the decorations and special effects
- The civil works and construction of the buildings inside the theme park
- The roads and plazas inside the theme park
- The landscaping and networks
- The equipment to operate the parks
- The setting up of the attractions, decorations & special effects (some extra cost with special cranes, lift baskets could be added if necessary)
- The tests, reception and documentation
- An estimation of the transport cost.
- The engineering works with the masterplan, technical designs, documentations and the supervision of the construction
- The training of the technical employees



AZTURK FUN PARK

8 - BUDGET PRICE CONDITIONS

Our proposal has been done according with our conditons to deliver the **AZERBAIJAN FUN PARK on turn key basis.**

At this stage the park investment budget is **not including** :

- The parking areas.
- Lakes and rivers
- The hotels, mall, restaurants, shops outside the theme park
- The consumables and spare parts during operation
- Any specific certifications.
- Any kind of taxes from customs, governments or related companies .
- Any kind of authorization or building permit.
- Any kinds of special civil works on swampy or seismic areas
- The roads, transport networks, signs outside of the park area
- The connections to the city utilities network. The utilities (Electricity, water supply and sewage connections) must be provided on site.
- The transport and living cost of our employees during the construction and setting up of the attractions.
- The construction site containers and base camp.
- Translation in an other language of all the documentation (English).
- Any equipment not expressly described in the supply



AZTURK FUN PARK

9 - AFTER SALES, MAINTENANCE CONTRACT AND SPARE PARTS

Our companies aim at building a long term relationship with our clients. We dispose over an AFTER SALES team in case you have any technical problems with the rides. Normally 95% of the problems can be solved by phone.

We have also the possibility to offer you a **MAINTENANCE CONTRACT** with Certification stating that the ride has been controlled technically every year. We also make you a list of suggested Spare Parts in order to maintain the ride in a good working conditions if necessary and put the Purchaser in a position to have always the necessary Parts in stock in order to avoid any downtime of the ride during the season.

Our company and industrial partners disposes over a store with a lot of components on stock available within 24 hours. We use Express Services to deliver **SPARE PARTS** in the quickest possible way worldwide.

If your park needs assistance to assemble these parts we dispose over a team of technicians available to assist on site.

Confidential document – Reproduction total or partial and redistribution to third part are forbidden without Fantawild & Lom approval



AZTURK FUN PARK

10 - TEST & COMMISSIONING

Our technician(s) will “assist” the rides assembly. This means that we supervise the assembly of the Rides in a correct way to ensure the proper working of the rides.

We supervise and we prepare the rides foundations according to the Loads

After the rides assembly we normally Test the rides immediately. During this process we make adjustments to the rides. The testing consists in a standard procedure executed by our technicians in order to check the stability ,safety and proper working of the rides. The rides will also be” fine –tuned “to ensure a smooth running of the rides.

After the rides Testing our team of Supervisors will give a training to the ride operators, electricians and technicians on how to operate the ride under normal conditions and in an emergency situation. They will be informed what type of maintenance must be done on the ride on a daily, weekly ,monthly and/or yearly basis. Simulations will be created in order to give a practical training to the ride operators on how to react in an emergency situation or abnormal situation.

If the Purchaser decides to postpone the rides Testing and/or Rides Training to a date many days after the rides assembly the Purchaser should pay extra for these new visits of our technicians. Depending on the time they have to spend a Fee per Day will be agreed for each visit.

The Purchaser will receive before the delivery of the rides a Manual for Operation and Maintenance. Before giving Instructions to the operators and the management and technical staff it is important they **ALL** have studied this Manual well.

In the end, the commissioning will take place is the final presentation of the ride working properly in all of its components.



AZTURK FUN PARK

11 - GUARANTY

We give a **one (1) year guaranty** of the attractions if they have been manufactured and set up by us or by our industrial partners. Additional extend of the guaranty can be done.

The warranty covers only structural defects of the manufacture on our side or on the side of our industrial partners.

The guaranty does not cover:

- Operations during war, strikes or by the act of hand God
- The parts of normal wear of exploitation (eg the wheels, joints, etc ..)
- Consumables during operation (eg oil, water, lamps, etc.)
- Damaged parts during wrong uses during operation time resulting in premature wear of parts.
- Parts damaged during major force events (eg lightings, wars, tsunamis, earthquakes, etc.)
- Spare parts of attractions not stored according to the correct procedure.
- Electrical parts during overvoltage or weather incident
- The painting of the attractions and decorations
- The deterioration of the decorations during the operation of the park



AZTURK FUN PARK

12 - VALIDITY OF PROPOSAL AND TERMS

VALIDITY OF PROPOSAL

This proposal has a VALIDITY of 3 months after which we cannot guarantee the budget quotation made in this proposal anymore. Due to fluctuations in prices for raw materials , components and rate fluctuations for services and fluctuations in currencies we are obliged to limit the validity of all of our proposals to a maximum of 90 days.

TERMS OF PAYMENT

To be defined according with the local situation.



AZTURK FUN PARK

13 - EMPLOYEES

ASSIGNMENT	EMPLOYEES
Attraction operators	180
Technical staff	120
Welcome staff	50
Retail staff	90
Food & beverage staff	200
Administration staff	170
Maintenance staff	100
Artist staff	100
Total estimated employees	1010

According with the expected number of visitors, the number of employees can increase for Retail and for Food and Beverage services.



AZTURK FUN PARK

14 - ORIGINE OF THE ATTRACTIONS

N°	ATTRACTIONS	MANUFACTURERS
1	Suspended Spherical Theater	CHINA
2	4D Dark Ride	CHINA
3	Motion Dark Ride	CHINA
4	Simulated Flight	CHINA
5	Shooting Dark ride	CHINA
6	4D environmental Theater	CHINA
7	3D Huge Screen Theater	CHINA
8	Water Screen + Special Effects	CHINA
9	AR Performance	CHINA
10	Dome Theater	CHINA
11	360° Theater	CHINA
12	Motion Seats Theater	CHINA
13	Launch Coaster	EUROPEAN
14	Giant swirl	EUROPEAN
15	Ferry Wheel	EUROPEAN
16	Orbital Discovery	EUROPEAN
17	Star cruiser Top Spin	EUROPEAN
18	Cosmic Ray Roller Coaster	EUROPEAN
19	Monorail	EUROPEAN
20	Explorer Ride	EUROPEAN
21	Rafting	EUROPEAN
22	Flume ride	EUROPEAN
23	Duelling Coaster	EUROPEAN
24	Sky Bar	EUROPEAN
25	Vulcan Train	EUROPEAN
26	Mad House	EUROPEAN
27	Magic Beasts ride	EUROPEAN
28	Duck Carrousel	EUROPEAN
29	Demolition Derby	EUROPEAN
30	Tea Cup	EUROPEAN
31	Avio Ride	EUROPEAN
32	Merry go Round arousel	EUROPEAN
33	Tower	EUROPEAN
34	Flying Swinger	EUROPEAN

On request, all attractions can be certified TUV.

We invite you to visit our factories & partners in China, Italy, France, Switzerland, England and Germany.



Confidential document - Reproduction total or partial and redistribution to third part are forbidden without Fantawild & Lom approval



AZTURK FUN PARK

15 - REFERENCES





AZTURK FUN PARK

15 - REFERENCES



- Nanning
- Xiamen



AZTURK FUN PARK

15 - REFERENCES



- Qingdao
- Ningbo
- Datong
- Tianjin





AZTURK FUN PARK

15 - REFERENCES



Confidential document – Reproduction total or partial and redistribution to third part are forbidden without Fantawild & Lom approval



AZTURK FUN PARK

16 - CONTACTS

Thank You

www.fantawild.com
www.loftusoverseas.com

Contact: M. Yann Tranlong

Europe: +33 (0)6 84 75 35 52

Tel: +852 39 10 60 24

Fax: +852 39 10 62 42

Loftus Overseas Management Ltd
Unit A, 7/F., Pico Tower, No. 66 Gloucester Road, Wan Chai, Hong Kong
email: yet @loftusoverseas.com

Fantawild Holding inc.
15F, 16 Ke Yan Road, Nanshan District, Shenzhen, China
Email: info@hytch.com

AZTURK HOLDING

+994555803176
info.azturk@gmail.com
info@azturkholding.com